

LUMIÈRE CONFIGURATION C

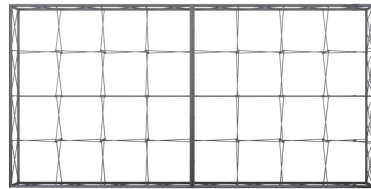
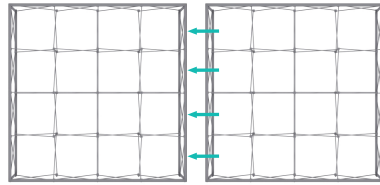
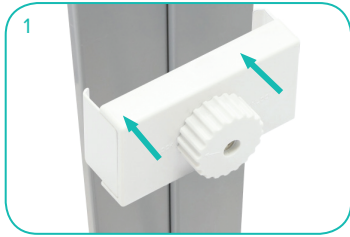
LUMIÈRE DISPLAY - SETUP INSTRUCTIONS

SET UP INSTRUCTIONS

(CONFIGURATION C)

Straight Connection (Side Extension)

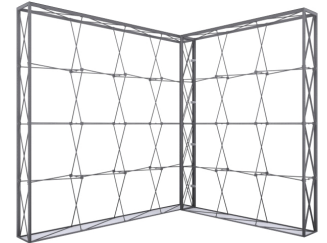
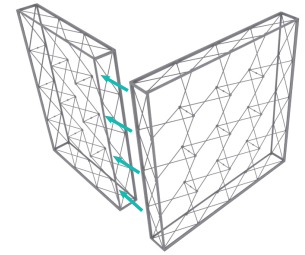
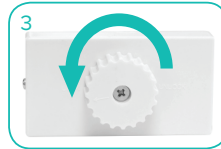
Adjoin both 4x4 frames, side by side. Place a straight connector directly in the middle (outside channel bar of each frame) of both frames. Turn the dial to the left to lock in place. Repeat for front and back vertical sections (8 total).



L Link Connection (Return Wall)

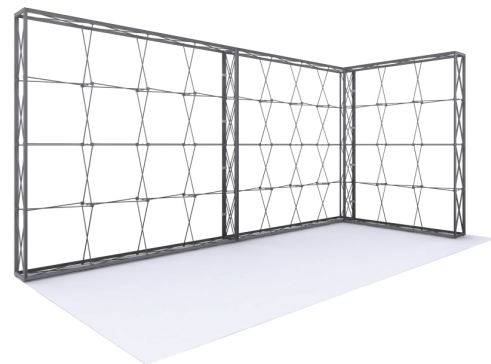
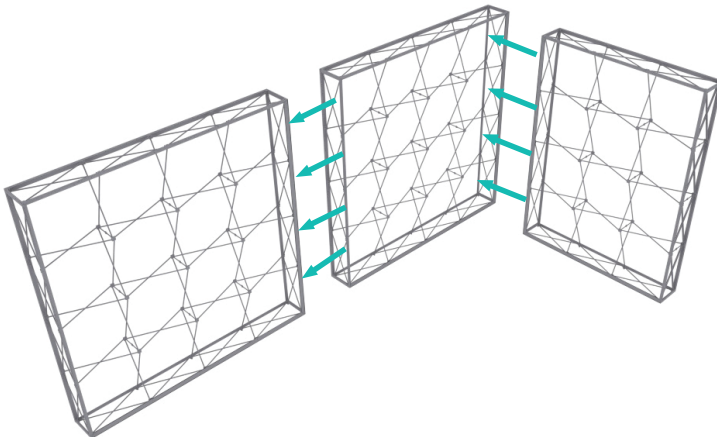


*Starting from behind, pull the 4x4 graphic away to make space for the L Connector. Place the L Connector onto the channel bars of both frames. Turn the dial to the left to lock the L Connector into place. Repeat for each vertical section (4 total).



Return Wall and Side Extension (Overall)

Adjoin the 3x4 frame perpendicular (90° angle) to the front side of a 4x4 frame. Next, adjoin an additional 4x4 frame on the opposite end of the other 4x4 frame.



Note: Renderings shown without graphics for clarity. Graphics must be installed before connecting.